

TERRE HAUTE REGIONAL AIRPORT

Welcomes you to the

Public Meeting

for the Terre Haute Regional Airport
Gateway Strategic Plan



What is the Airport Gateway Strategic Plan?

The business corridor along Indiana 46/US40 on Terre Haute's east side has begun to develop into a commercial corridor. This corridor's location adjacent to the Terre Haute Regional Airport poses both immense opportunities for further development of the airport as well as compatible land use challenges. The goal of the Strategic Plan is to provide a coordinated planning effort for the area. This planning effort will provide an opportunity to identify any areas where certain types of development might be limited to preserve the utility of the airport.

What is the Airport Gateway Strategic Plan?

Elements of the Strategic Plan:

- Development Options
- Gateway Beautification
- Airport Overlay Zoning

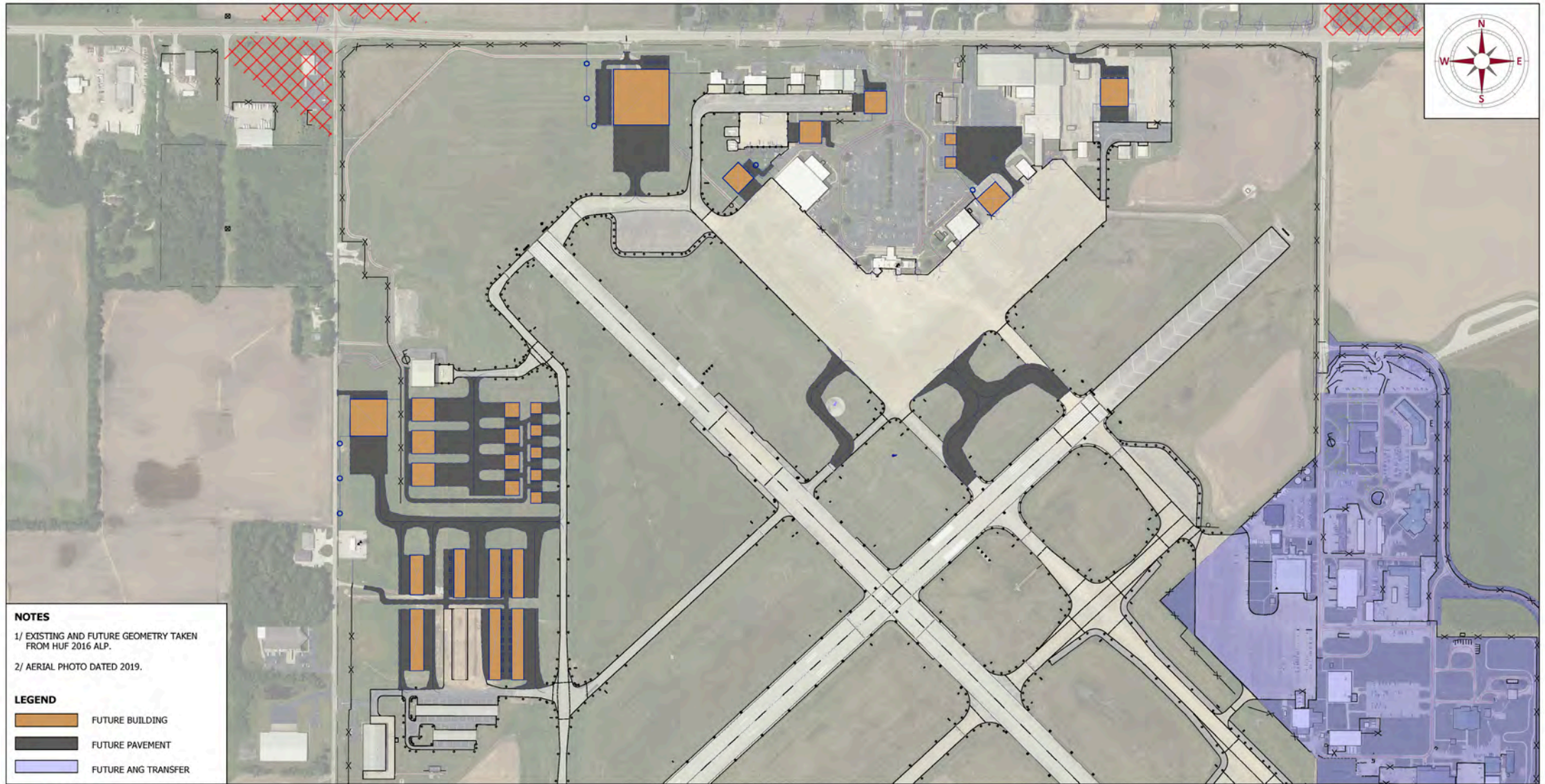
Development Options

Airport-Focused Development includes:

- Further Expansion of Hangar Facilities
- Potential Military Support Facilities
- Potential Solar Development

TERRE HAUTE REGIONAL AIRPORT AIRPORT RUNWAY ANALYSIS

[DRAFT]



PREPARED BY: NEWHOUSE & ASSOCIATES, DECEMBER 2020

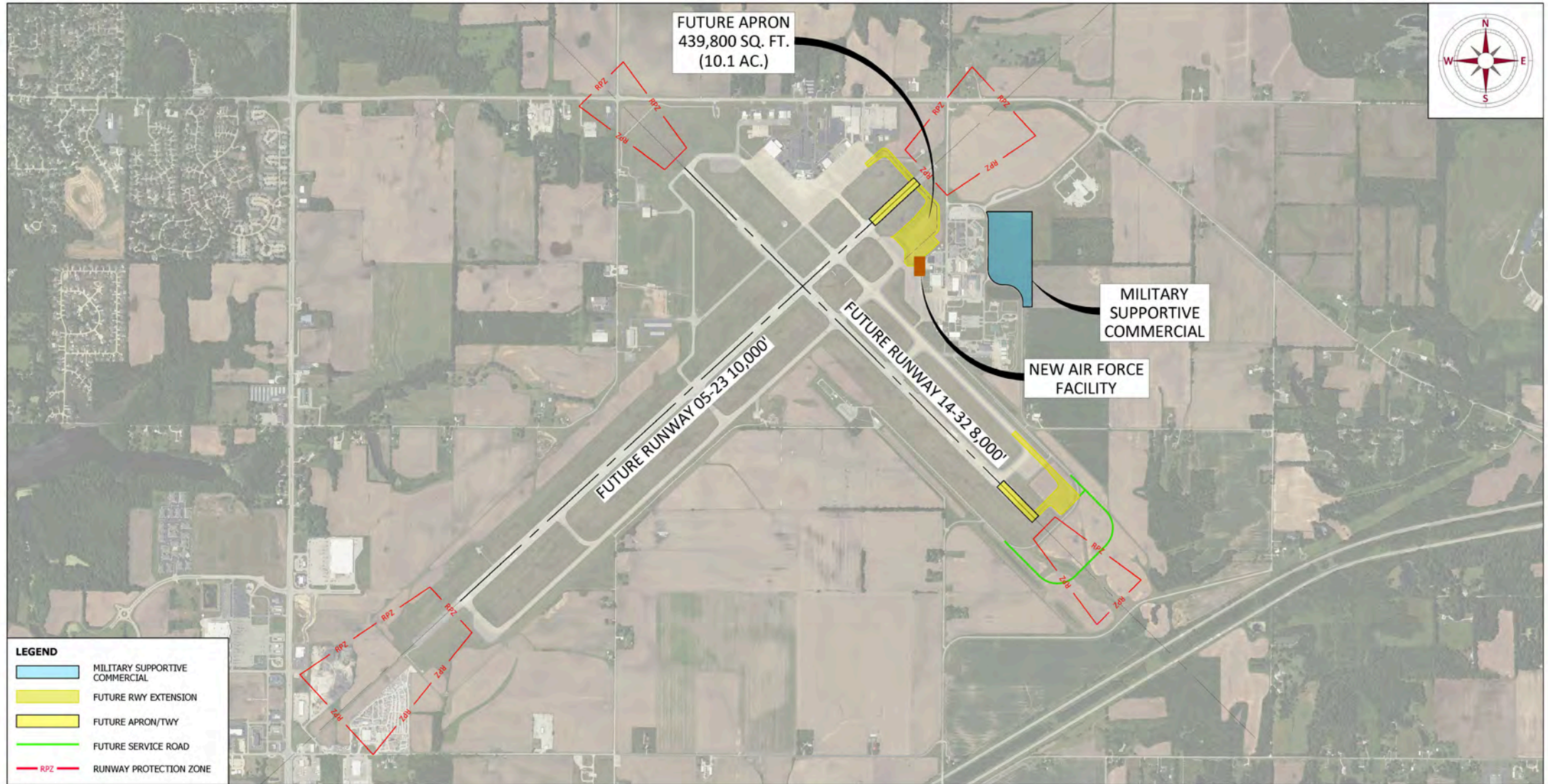


Potential Airport Development



TERRE HAUTE REGIONAL AIRPORT AIRPORT RUNWAY ANALYSIS

[DRAFT]



PREPARED BY: NEWHOUSE & ASSOCIATES, DECEMBER 2020

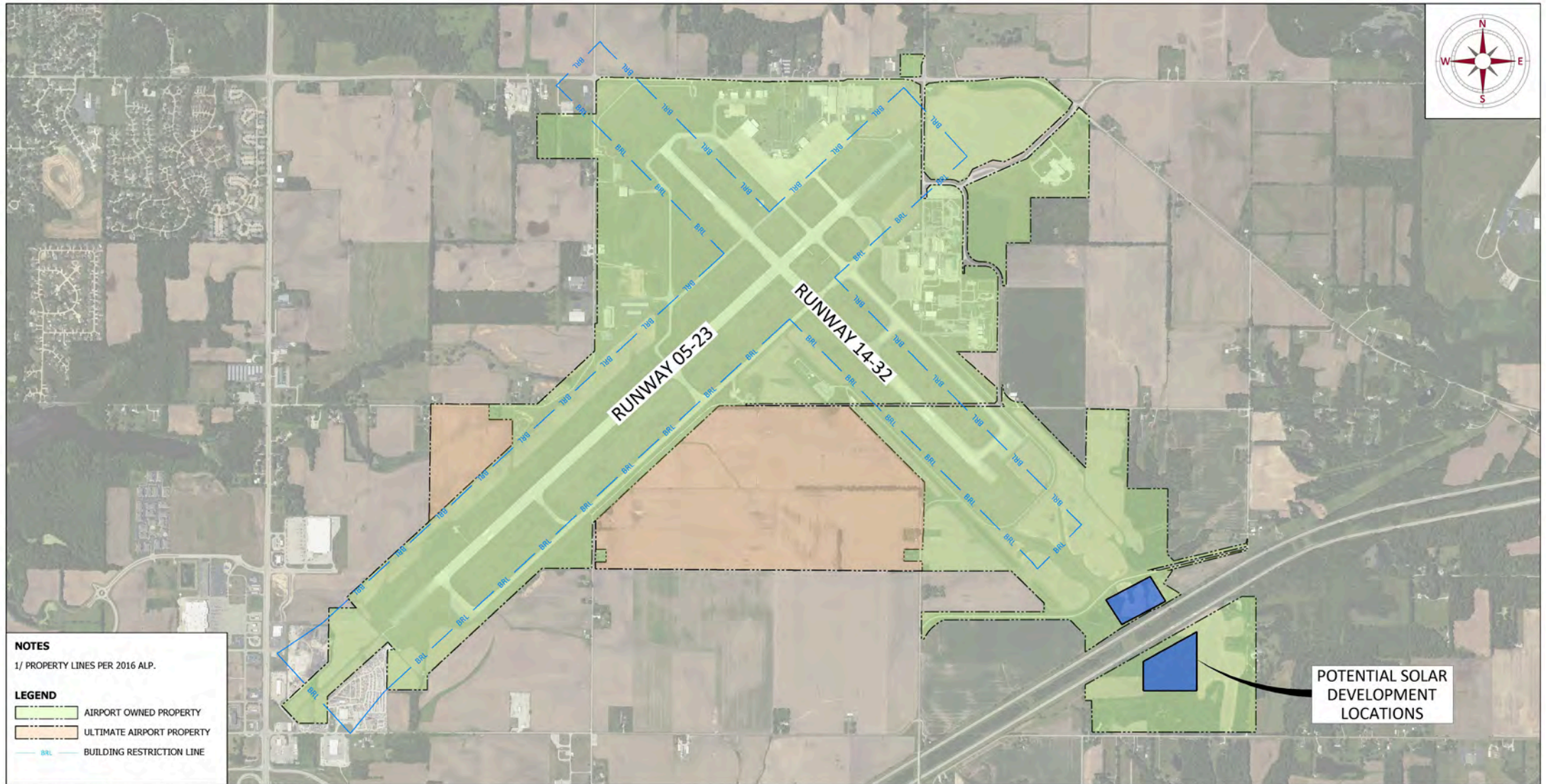


Potential Military Development



TERRE HAUTE REGIONAL AIRPORT AIRPORT RUNWAY ANALYSIS

[DRAFT]



PREPARED BY: NEWHOUSE & ASSOCIATES, DECEMBER, 2020



Potential Solar Development

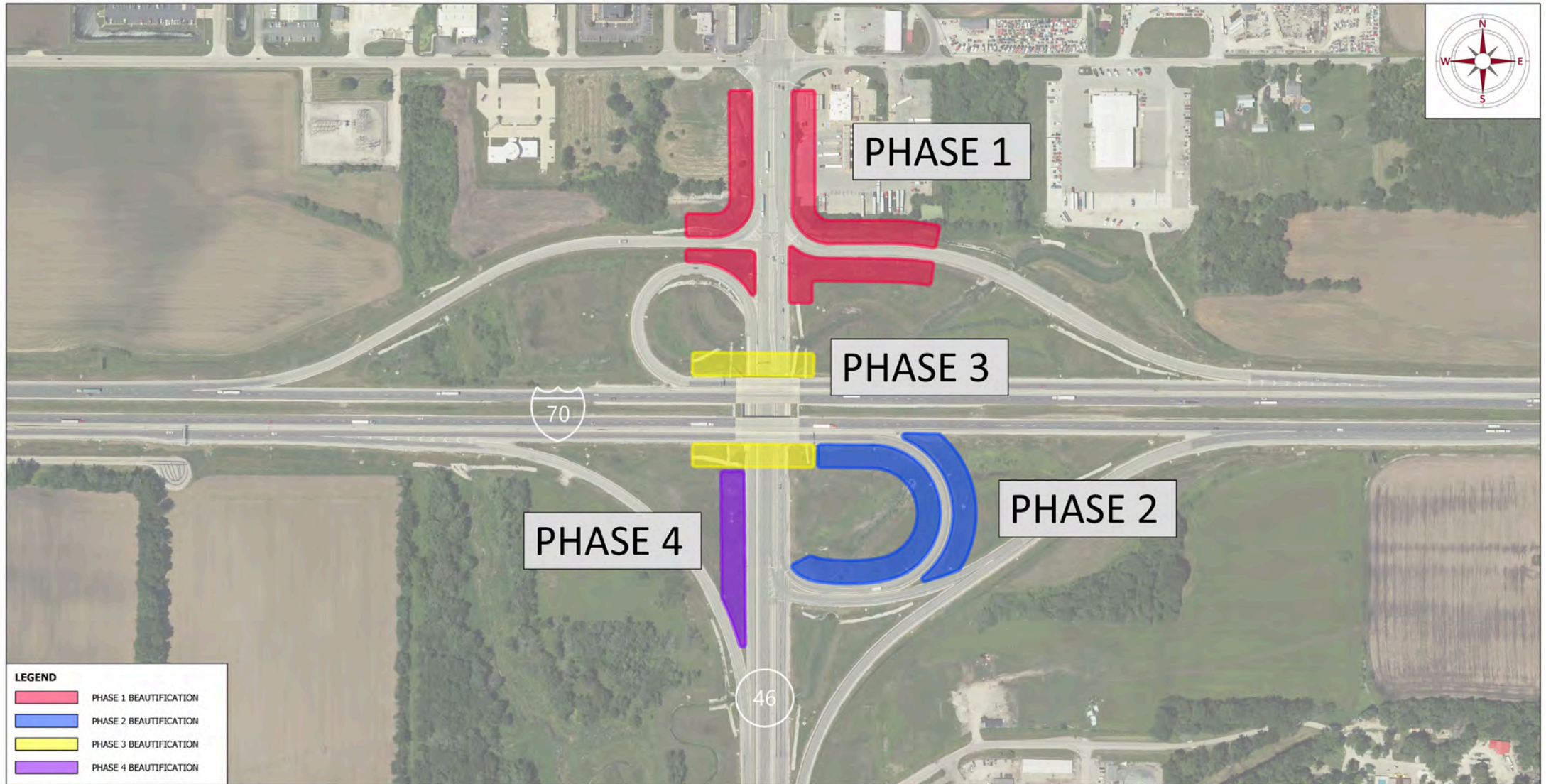


Gateway Beautification

Schematic Design Workbook – Corridor Enhancement

A combination of landscape plantings, art/sculpture, and signage will be used to:

- Announce that the driver has entered a special district
- Provide directional information, as appropriate
- Provide continuity along the corridor
- Highlight certain areas or features
- Shield any objectionable views by leading the eye away
- Screen any objectionable views, to the extent possible, with plant material



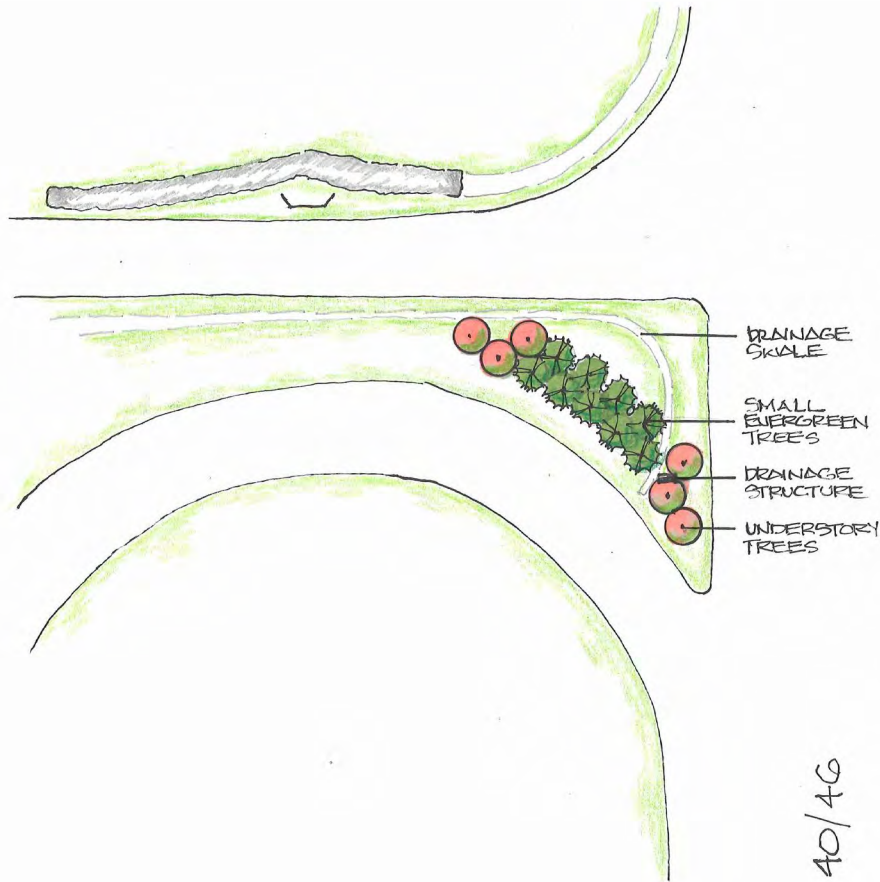
PREPARED BY: NEWHOUSE & ASSOCIATES, DECEMBER 2020



Gateway Beautification Phasing



Phase 1 Conceptual Planting



Monument Concept



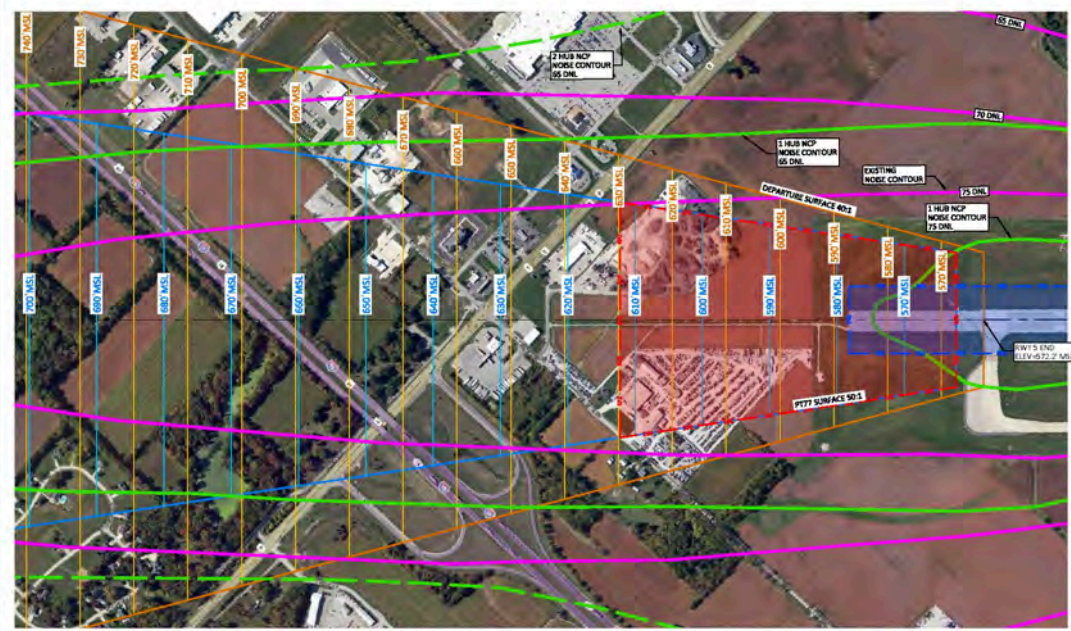
Directional Concept



Airport Overlay Zoning

Airport Land Use Compatibility

- Federal Compliance - Compatible Land Use and Airspace Protection
 - Height Limitation of Objects Around Airports
 - Lighting and Signal Interference
 - Aircraft Noise in Land Use Planning
 - Hazardous Wildlife Attractants
- State of Indiana Compliance - Indiana Tall Structures Act
 - Tall Structure Permit
 - Noise Sensitive Permit

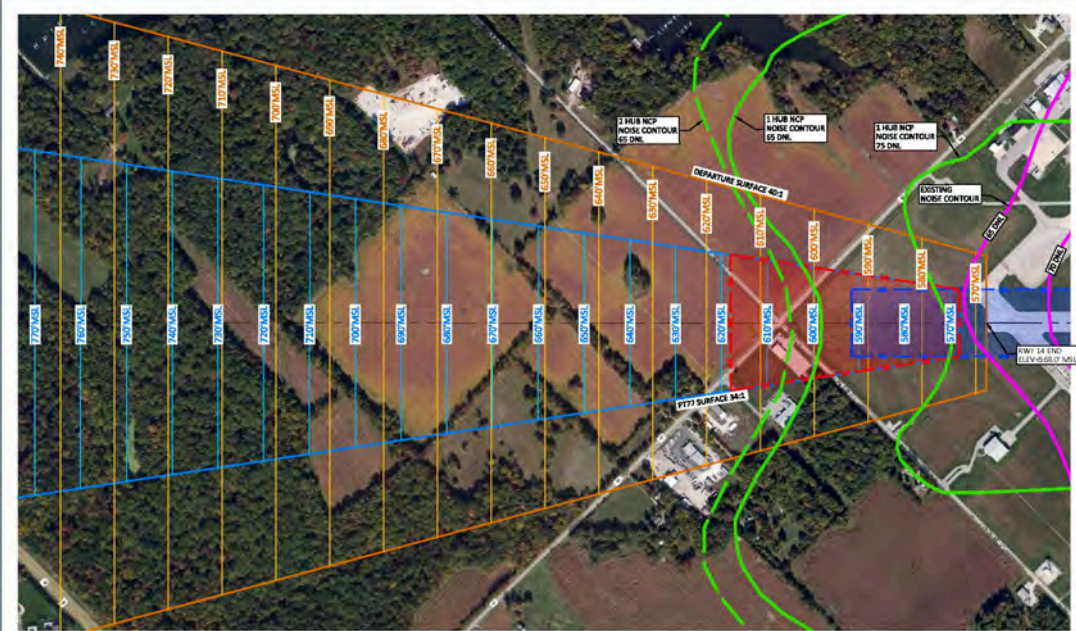


Notes:
 1. NOISE CONTOUR TAKEN FROM EXISTANT 2018 NOISE COMPATIBILITY STUDY (NCS) DATA.
 2. DEVELOPMENT IS NOT PERMITTED WITHIN THE RUNWAY SAFETY AREA (RSA) AND THE RUNWAY PROTECTION ZONE (RPZ).
 Drawn: SLS, Approved: JLD, Date: 09-29-2020.

No.	Date	Revisions

GRAPHIC SCALE: 1" = 500'

Runway 5 PART77 and DEPARTURE AIRSPACE
 Terre Haute Regional Airport Airspace Analysis

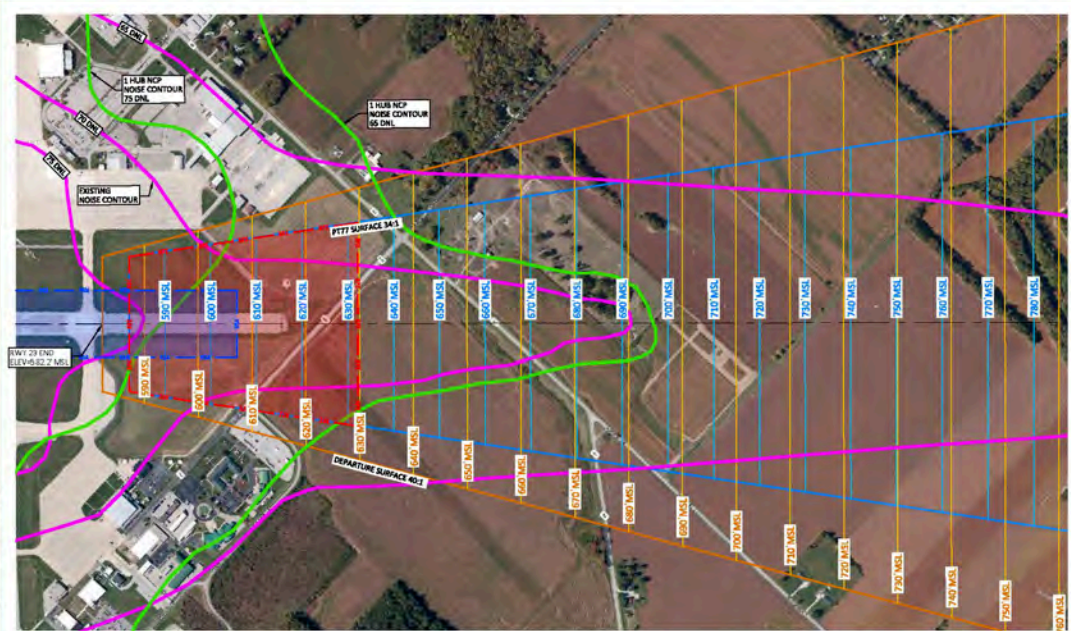


Notes:
 1. NOISE CONTOUR TAKEN FROM EXISTANT 2018 NOISE COMPATIBILITY STUDY (NCS) DATA.
 2. DEVELOPMENT IS NOT PERMITTED WITHIN THE RUNWAY SAFETY AREA (RSA) AND THE RUNWAY PROTECTION ZONE (RPZ).
 Drawn: SLS, Approved: JLD, Date: 09-29-2020.

No.	Date	Revisions

GRAPHIC SCALE: 1" = 500'

Runway 14 PART77 and DEPARTURE AIRSPACE
 Terre Haute Regional Airport Airspace Analysis



Notes:
 1. NOISE CONTOUR TAKEN FROM EXISTANT 2018 NOISE COMPATIBILITY STUDY (NCS) DATA.
 2. DEVELOPMENT IS NOT PERMITTED WITHIN THE RUNWAY SAFETY AREA (RSA) AND THE RUNWAY PROTECTION ZONE (RPZ).
 Drawn: SLS, Approved: JLD, Date: 09-29-2020.

No.	Date	Revisions

GRAPHIC SCALE: 1" = 500'

Runway 23 PART77 and DEPARTURE AIRSPACE
 Terre Haute Regional Airport Airspace Analysis



Notes:
 1. NOISE CONTOUR TAKEN FROM EXISTANT 2018 NOISE COMPATIBILITY STUDY (NCS) DATA.
 2. DEVELOPMENT IS NOT PERMITTED WITHIN THE RUNWAY SAFETY AREA (RSA) AND THE RUNWAY PROTECTION ZONE (RPZ).
 Drawn: SLS, Approved: JLD, Date: 09-29-2020.

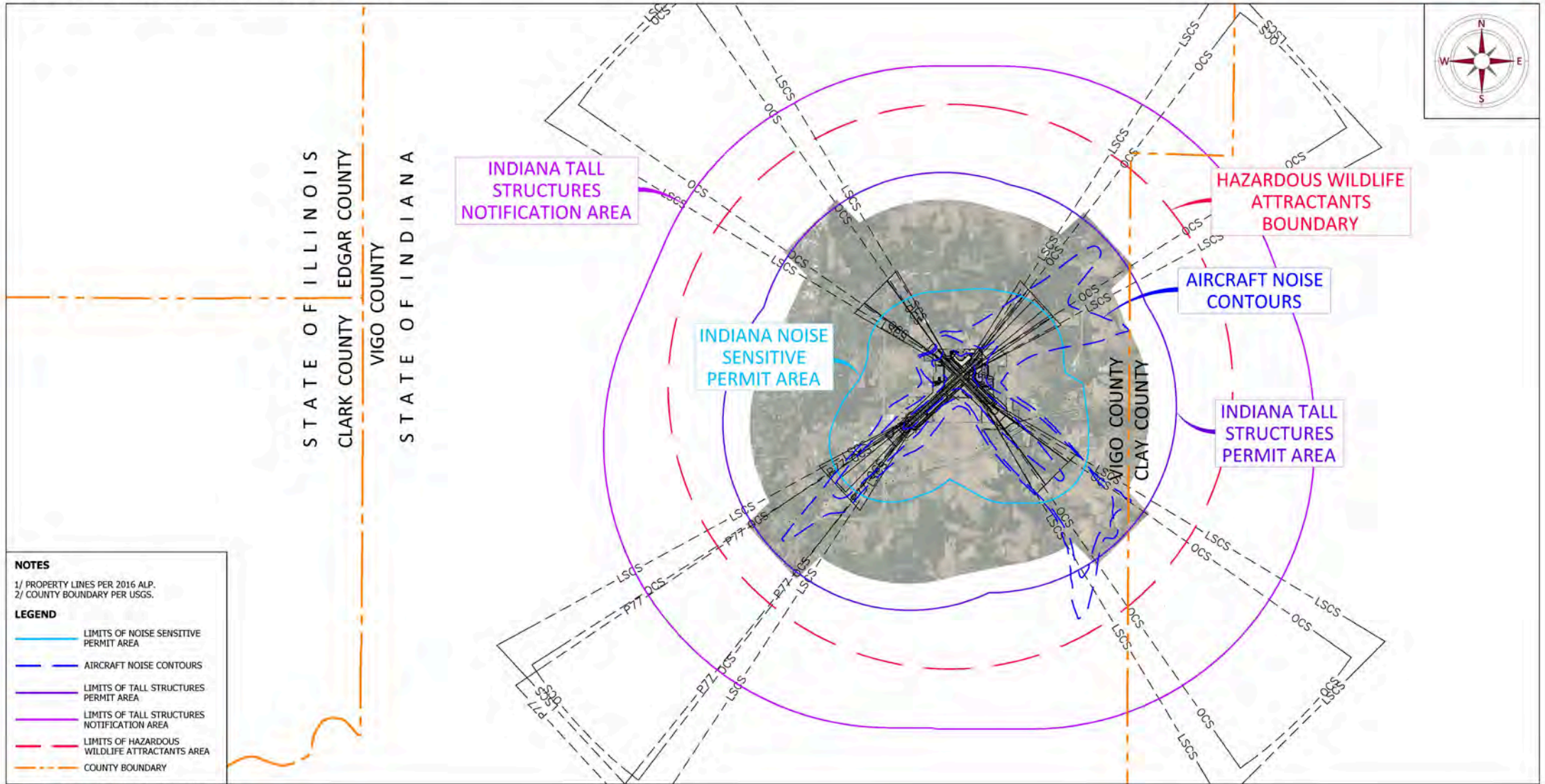
No.	Date	Revisions

GRAPHIC SCALE: 1" = 500'

Runway 32 PART77 and DEPARTURE AIRSPACE
 Terre Haute Regional Airport Airspace Analysis

TERRE HAUTE REGIONAL AIRPORT AIRPORT RUNWAY ANALYSIS

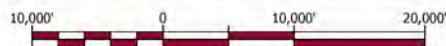
[DRAFT]



PREPARED BY: NEWHOUSE & ASSOCIATES, DECEMBER, 2020



Airport Overlay Zoning Requirements



Next Steps

- Strategic Plan team compiles and address any comments
- Strategic Plan team prepares and submits Final Strategic Plan to the Terre Haute Regional Airport Gateway Steering Group for adoption
- Public Meeting for review of Final Strategic Plan
- Terre Haute Regional Airport in conjunction with City of Terre Haute, Vigo County, Terre Haute Chamber of Commerce and Steering Group members implement projects identified in Strategic Plan

We want to hear from you!

- Please take a moment to provide us with your comments and input
- You can leave your comments tonight or send them to us later – all comments must be received by March 19, 2021
- To submit a comment, email to PublicComment@Newhouse.Associates
- For more information, visit HUF.Com